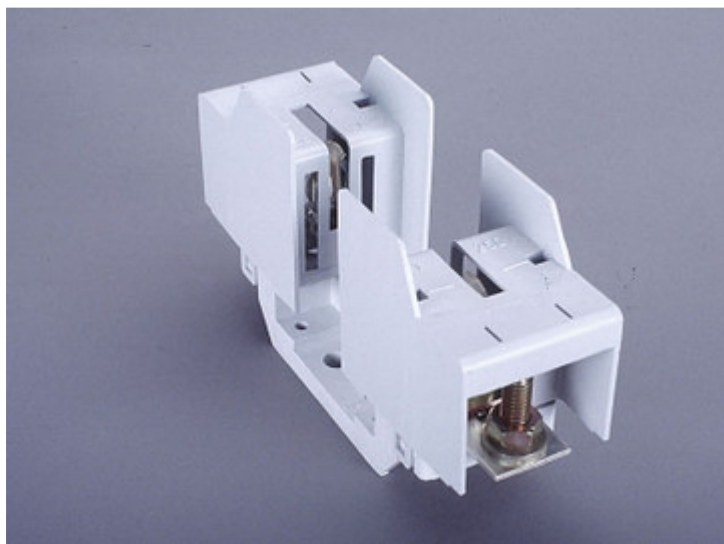


NH.fuse-base 250 A, panel mounting (03 762)



Description

Article

Part No.: 03 762

QUADRON® Panel

NH.fuse-base 250 A, panel mounting

both sides screw, with touch protection

size 1 / 1P

System

Mounting plate

Product group 10

Subgroup 06

pack size 3

EAN 4021267037628

Advantages of the product

For safe connection of the leads, the shock protection is split into 2.

Catalog page 2015 : 6/13

eCl@ss 6.1 27142106
eCl@ss 7.1 27142106
ETIM 4.0 EC000067
ETIM 5.0 EC000067

Approvals

Standards

IEC 60269-1:2006 + A1:2009 + A2:2014
IEC 60269-2:2013

Approvals

Germanischer Lloyd



Product data

Electrical data

Rated current (IEC): 250 A
Rated voltage (IEC) AC: 690 V
Rated voltage (IEC) DC: 440 V

Power dissipation:

The power dissipation at a typical load of 80% of the rated current results to 3.5 W.
(The power dissipation for operation with rated current would be 5.5 W.)

rated isolation voltage U_i (AC): 800 V
Rated surge voltage U_{imp} : 6 kV
max. permitted voltage (IEC) AC: 1000 V
max. permitted voltage (IEC) DC: 1000 V

breaking capacity with fuses: 50 kA

1000V DC, air and creepage distances to DIN EN 60664-1, VDE 0110 Part 1 are to be considered for fuse links IEC 60269-2 / DIN VDE 0636-201 size 1 to 32W power dissipation

Mechanical data

W x H x D: 60 x 205 x 110

Weight: 48.6 kg/100

Poles: 1-pole

Connection screw (aluminium terminal can be retrofitted):
screw connection M10, 18 - 22Nm torque,
aluminium connection 2 x M8, cross-section 70 - 150mm²,
Cu - Al, 10Nm torque

Terminal points

NHUT_SCHRAUBE_M10

Material properties

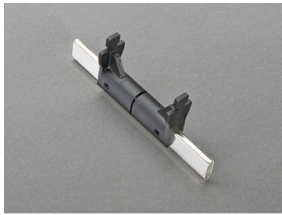
Main body: temperature stability 125°C,
self-extinguishing in acc. to UL 94,
creepage resistance CTI 200,
halogen-free

Contacts: spring-loaded copper contacts, silver plated

Screws: screw M10, galvanized, chromized

Shock protection cover: temperature stability 125°C,
self-extinguishing in acc. to UL 94,
creepage resistance CTI 200,
halogen-free

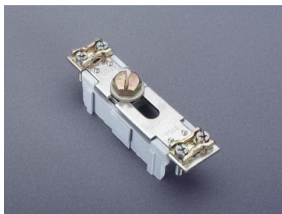
Accessories



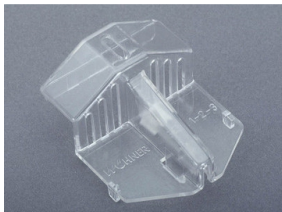
03 162
knife link 250 A
size 1



03 502
NH fuse extractor handle
open
size 000 - 3



03 668
neutral conductor 160 A, disconnectable
clamp on both sides



79 449
grip lug cover
for NH fuse base
size 1 - 3